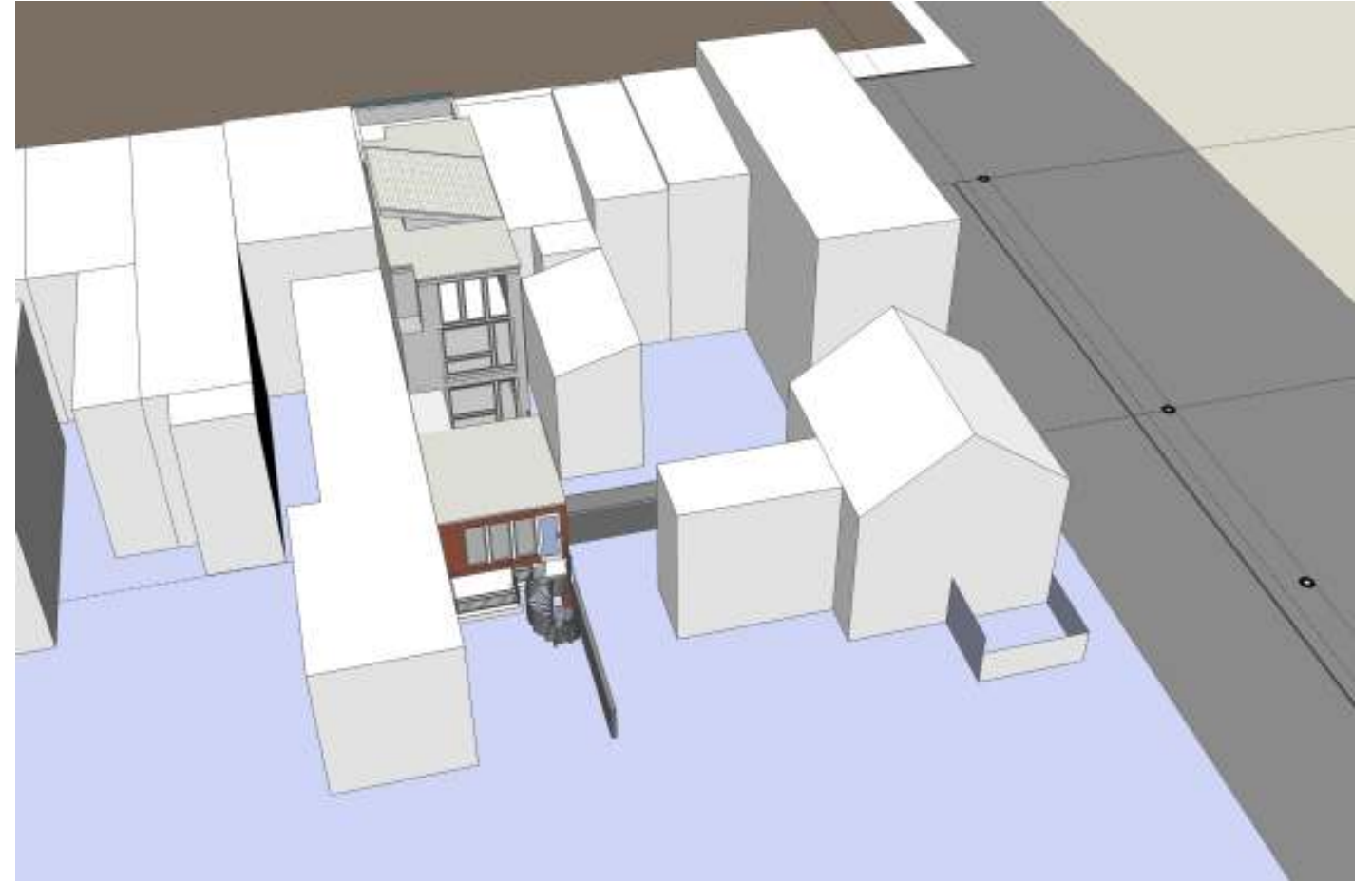




Rear View: CHAP Hearing 04.09.2013



Rear View: CHAP Hearing 07.09.2013 Revised

CLIENT: Courtney Klein & Ezra
Hercenberg
PROJECT: 825 S. Bond St.
Baltimore, MD 21231
DATE: 06.14.2013

CHAP Submission
Fells Point Historic District

trace **A-8**
ARCHITECTS

338 E. 25TH ST, SUITE 100
BALTIMORE, MD 21218
(P) 443 838 0379
www.tracearchitects.com jim@tracearchitects.com